

DUOFIT® In-Wall Tank Unit, 1.28GPF & 0.9GPF

FEATURES

- Dual flush system, low consumption (1.28GPF/4.8LPF & 0.9GPF/3.4LPF)
- Adjustable 15"-19" mounting height
- Support up to 880lbs
- Commercial 2" x 6" or optional residential installation with 2" x 4" wall studs with waste outlet kit
- 1-pc blow molded, insulated polyethylene tank to prevent leaks and sweating
- 2" x 6" Polyethylene outlet included
- Pre-plumbed for WASHLET®+ connection

MODELS

- WT172M - with copper washlet supply line

Required Push Plates (Sold Separately)

- YT920 #MS - Matte Silver
#WH - White
- YT930 #MS - Matte Silver
#WH - White
- YT970 #SS - Stainless Steel
- YT980 #SS - Stainless Steel

Compatible Outlets (Sold Separately)

- THU343 2" x 4" outlet HDPE & PVC
- THU335 2" x 6" outlet cast iron
- THU807 WASHLET connection kit

Compatible Toilet Bowl (Sold Separately)

- CT447CFG, RP™ Wall-hung toilet
- CT449CFG, SP™ Wall-hung toilet
- CT437FG, MH™ Wall-hung toilet

PRODUCT SPECIFICATION

This universal height, high-efficiency, dual flushing, in-wall tank system toilet shall be 1.28GPF & 0.9GPF. Requires TOTO toilet model CT447CFG, CT449CFG, or CT437FG. In-Wall tank system shall be TOTO Model WT172M_____.



CODES/STANDARDS

- Meets and exceeds
 - Carrier system: ASME A112.6.2
 - Tank trim: IAPMO PS50, CSA B125.3, ASSE1002
- Certifications: IAPMO(cUPC), *EPA Watersense, State of Massachusetts, City of Los Angeles, and others
- Code compliance: UPC, IPC, NSPC, NPC Canada, and others
- Complies with CA Prop 65 warning requirements



*WaterSense certification only applies to WT172M when combined with either model CT447CFG, CT449CFG, or CT437FG toilet bowls.

WT172M

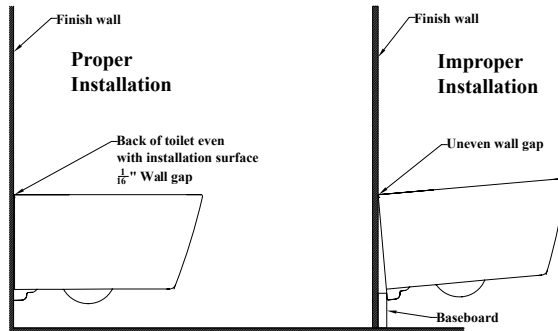
DUOFIT In-Wall Tank Unit, 1.28GPF & 0.9 GPF

SPECIFICATIONS

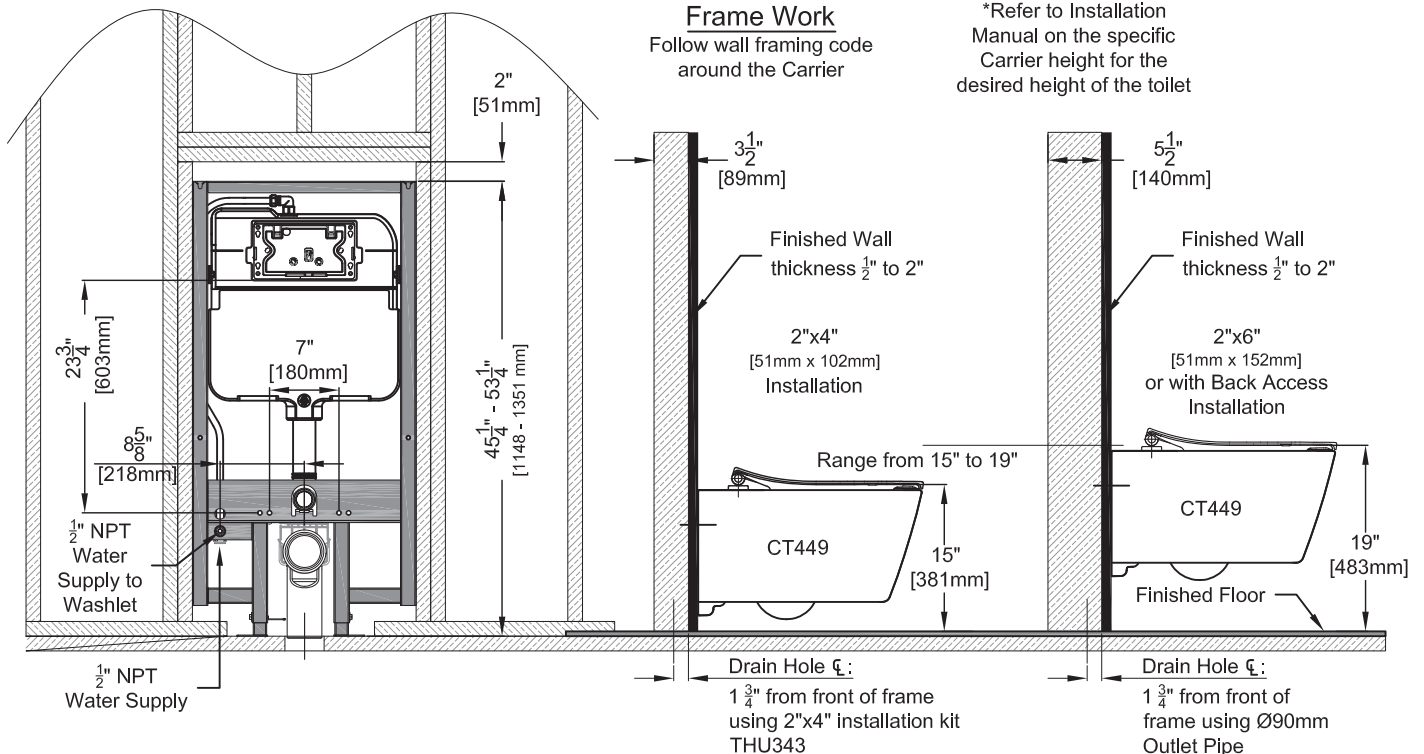
- Water Use 1.28GPF & 0.9GPF (4.8LPF & 3.4LPF)
- Flush System Dual-flush
- Min. Water Pressure 8 psi (static)
- Max. Water Pressure 108.75 psi (static)
- Installation Height 15" to 19" (projected range)
- Warranty One Year Limited Warranty
- Material Various
- Shipping Weight 45 lbs
- Shipping Dimensions 47-1/2" x 26" x 6"

INSTALLATION NOTES

Adequate structural bracing is required. Framing support should be capable of supporting 880 lbs load without damage to the wall. See installation manual for more details.



DIMENSIONS



TOTO

These dimensions and specifications are subject to change without notice

Basic Round Push Plate - Dual Button

FEATURES

- Push plate with dual buttons that mounts to TOTO in-wall tank system WT171M, WT172M, or WT173M.
- Push plate in Matte Silver or White.

MODELS

- YT930 #MS - Matte Silver
- YT930 #WH - White



COLORS/FINISHES

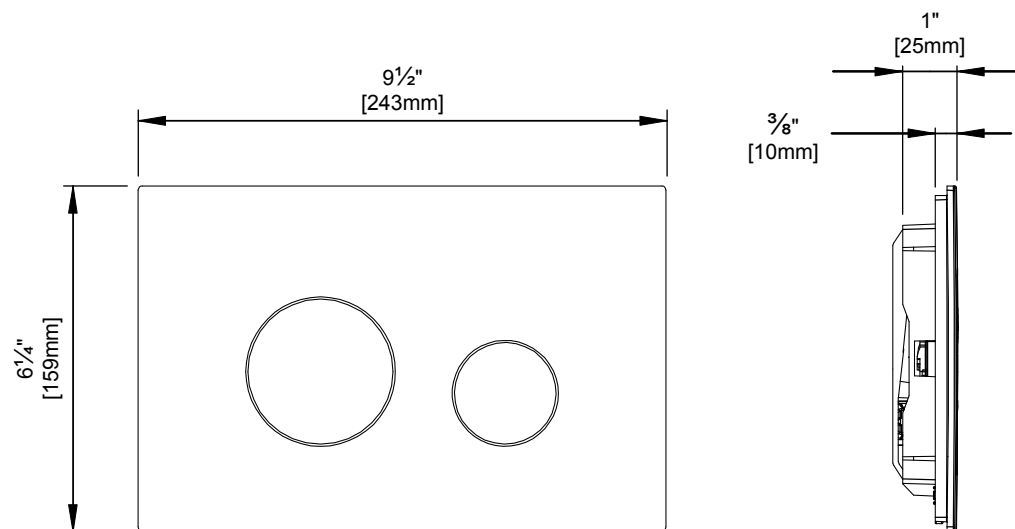
- #MS - Matte Silver
- #WH - White

PRODUCT SPECIFICATION

Push plate shall be model # YT930#____ Push plate shall be either Matte Silver or White with 2 actuators on the front. Push plate shall be mounted to in-wall tank system WT172M.

SPECIFICATIONS

- | | |
|-----------------------|-------------------------|
| • Warranty | 1-year limited warranty |
| • Material | ABS |
| • Shipping Weight | TBD |
| | Carton (10pcs.) TBD |
| • Shipping Dimensions | 10" x 7" x 2" |
| | Carton (10pcs.) |
| | TBD |



EP Wall-Hung Toilet, 1.28 GPF & 0.9 GPF

FEATURES

EP Bowl

- DYNAMAX TORNADO FLUSH® system, high efficiency (1.28 GPF/0.9 GPF)
- CEFIONTECT® ceramic glaze - prevents debris, mold from sticking to ceramic surfaces
- Universal Height
- Elongated front bowl

DuoFit In-Wall Tank

- Dual flushing system, high-efficiency (1.28 GPF/4.8 LPF & 0.9 GPF/3.4 LPF) Avg. flush 1.03 GPF
- Adjustable 15"-19" mounting height
- Saves up to 9" of floor space compared to standard floor-mounted toilet
- Supports up to 880lbs
- Commercial 2" x 6" or optional residential installation with 2" x 4" wall studs with waste outlet kit
- Copper supply line

Push Plate

- YT930
Basic Round Push Plate
#WH White Matte or #MS Matte Silver

KIT COMPONENTS

- CT428CFG#01
EP Wall-Hung Toilet
- WT172M#01
In-Wall Tank System (Copper Pipe)
- YT930
Basic Round Push Plate
#WH White Matte or #MS Matte Silver

Available Options

- YT920#WH - White Matte Basic Square Push Plate
- YT920#MS - Matte Silver Basic Square Push Plate
- YT970#SS - Stainless Steel Wall Square Push Plate
- YT980#SS - Stainless Steel Wall Round Push Plate
- SS114 - SoftClose Seat

COLORS/FINISHES

- Standard
#01 Cotton



D+ DYNAMAX
TORNADO FLUSH

SD Skirted Design

CE CEFIONTECT

CODES/STANDARDS

- Meets or exceeds:
 - Bowl: ASME A112.19.2/CSA B45.1, ASME A112.19.14
 - Carrier System: ASME A112.6.2
 - Tank Trim: IAPMO PS50, CSA B125.3, ASSE1002
- Certifications: IAPMO (cUPC), EPA WaterSense State of Massachusetts, City of Los Angeles and others
- Legislative compliance: California AB715, California Green Building Code, City of Los Angeles Water Efficiency Ordinance
- Code Compliance: UPC, IPC, NSPC, NPC Canada, and others
- Complies with CA Prop 65 warning requirements



CWT428CMFG

EP Wall-Hung Toilet, 1.28 GPF & 0.9 GPF

PRODUCT SPECIFICATIONS

	CT428CFG	WT172M
Water Use	1.28 GPF & 0.9 GPF (4.8 LPF & 3.4 LPF)	1.28 GPF & 0.9 GPF (4.8 LPF & 3.4 LPF)
Flush System	DYNAMAX TORNADO FLUSH®	Dual flushing
Min. Water Pressure	8 psi (static)	8 psi (static)
Water Surface	5-1/2" X 4-1/8"	
Trap Diameter	2-1/8"	
Installation Height	15" to 19"	15" to 19"
Trap Seal	2-1/8"	
Warranty	One Year Limited Warranty	One Year Limited Warranty
Material	Vitreous China	Various
Shipping Weight	68 lbs	38 lbs
Shipping Dimensions	22" L x 14.6" W x 16.5 H	48" L x 26-1/2" W x 6" H

CT428CFG

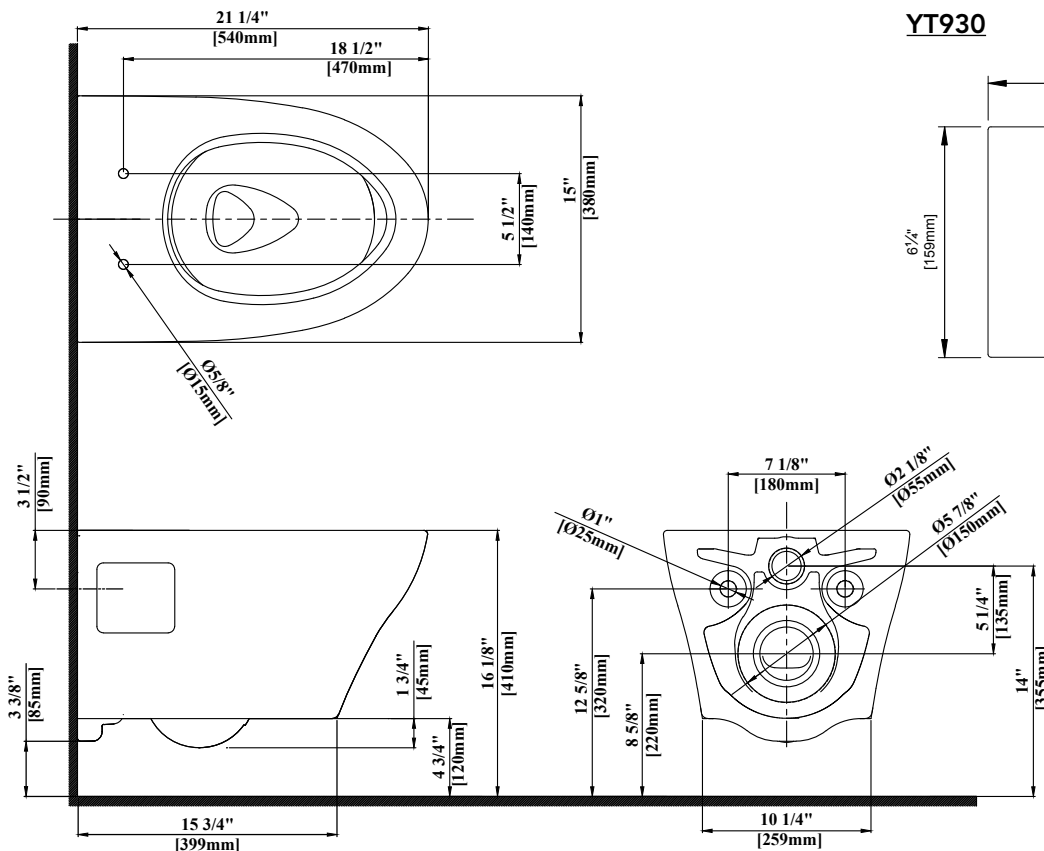
This universal height, high efficiency DYNAMAX TORNADO flushing system toilet shall be 1.28 GPF & 0.9 GPF. Toilet shall have CEFIONTECT® ceramic glaze. Toilet shall be mounted to in-wall tank system, elongated front bowl and wall-mounted push-button type trip lever. Toilet shall be TOTO Model CT428CFG.

WT172M

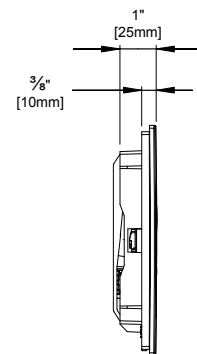
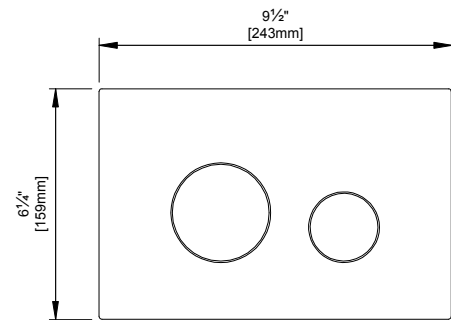
This universal height, high-efficiency, dual flushing, in-wall tank system toilet shall be 1.28 GPF & 0.9 GPF. Requires TOTO toilet model CT428CFG. In-Wall tank system shall be TOTO Model WT172M.

PRODUCT DIMENSIONS

CT428CFG



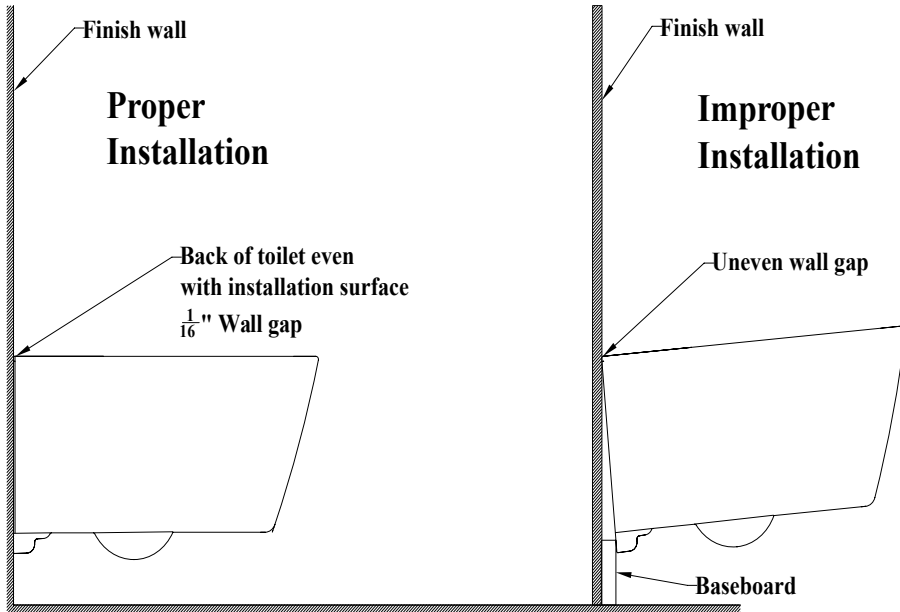
YT930



CWT428CMFG

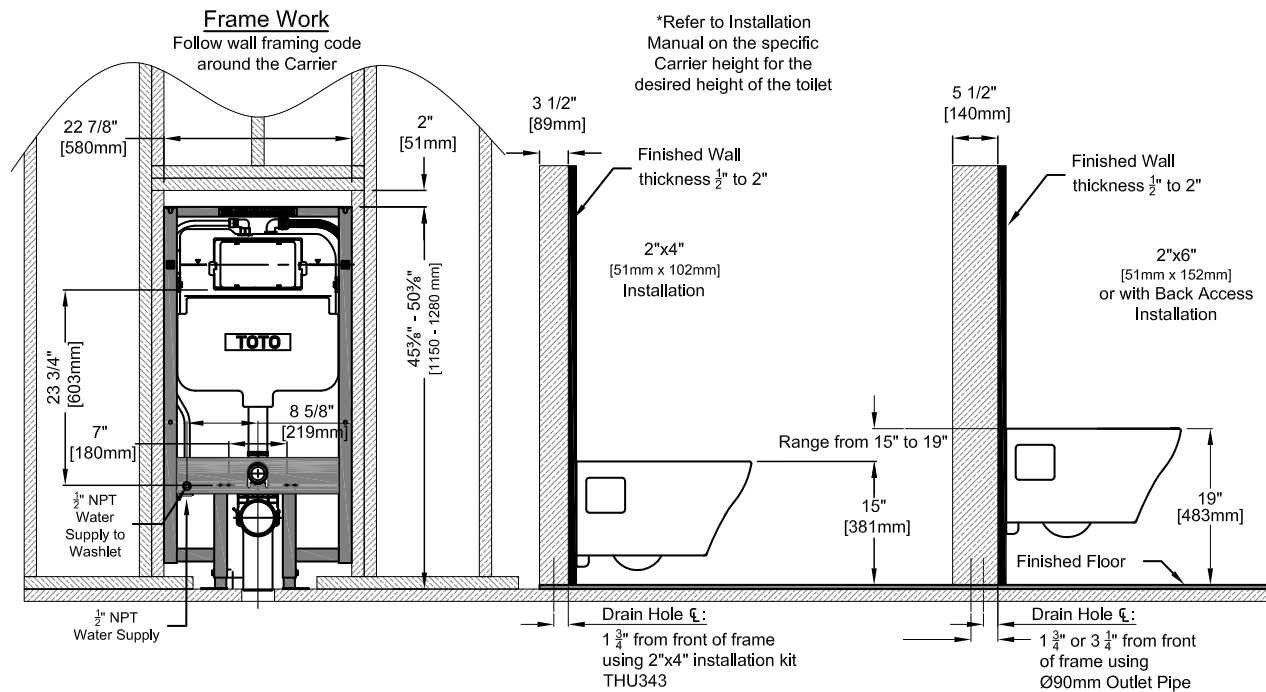
EP Wall-Hung Toilet, 1.28 GPF & 0.9 GPF

INSTALLATION NOTES



DIMENSIONS

WT172M



TOTO

These dimensions and specifications are subject to change without notice

FEATURES

- Closed front toilet seat and cover with SOFTCLOSE hinge system
- Mounting hardware included

MODELS

- SS114 - Elongated SOFTCLOSE seat
- SS113 - Round SOFTCLOSE seat



COLORS/FINISHES

- Standard
 - #01 Cotton
 - #03 Bone
 - #11 Colonial White
 - #12 Sedona Beige
 - #51 Ebony

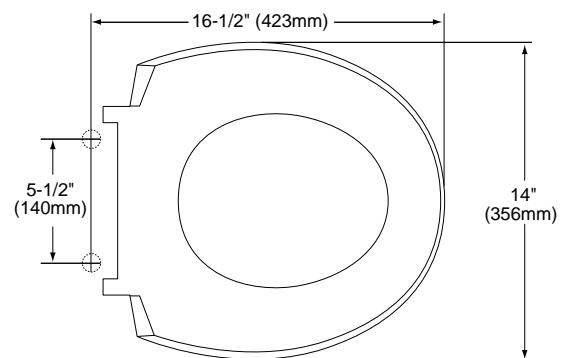
SPECIFICATIONS

- Warranty: 1-year limited warranty
- Material: Polypropylene
- Shipping Weight: 6.6 lbs. (SS114)/6.2 lbs. (SS113)
- Shipping Dimensions: 18-1/2" x 14-1/2" x 3"

PRODUCT SPECIFICATION

Seat shall be model # SS114 or # SS113____. Seat shall be solid plastic with closed front seat and cover. Wide back design shall feature a rounded cover with integral bumpers. Hinges to be color matched with noncorrosive nylon stud and nut.

SS113 - Round SOFTCLOSE Seat



SS114 - Elongated SOFTCLOSE Seat

